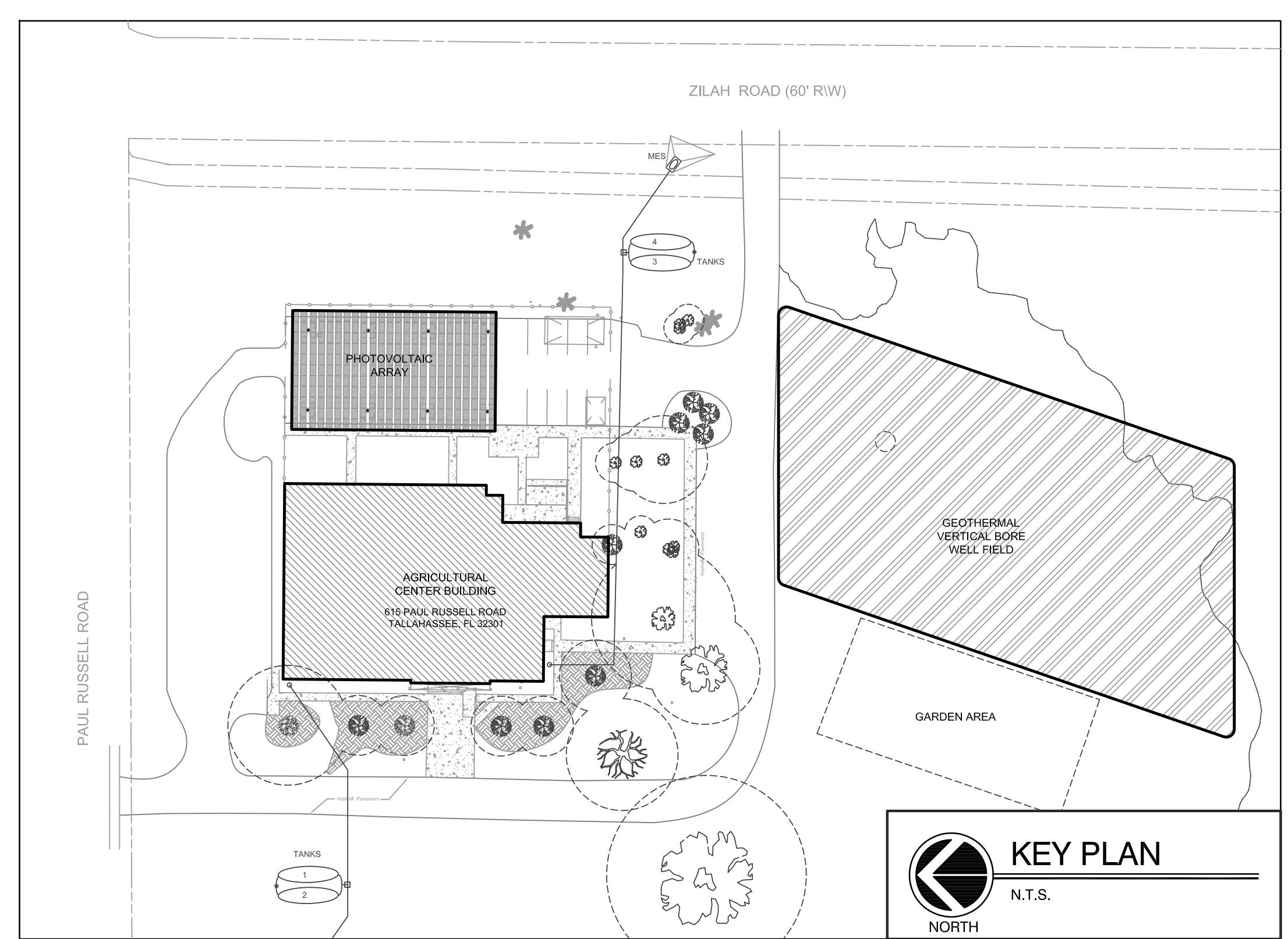


# Leon County Sustainable Demonstration Center

Leon County Facilities Management & Construction  
Tallahassee, FL

## 100% CONSTRUCTION DOCUMENTS Bid Package No. 3 - Electrical



<p style="text-align: center; font-weight: bold; font-size: 1.2em;">SITE LOCATION PLAN</p> 	<p style="text-align: center; font-weight: bold; font-size: 1.2em;">INDEX OF DRAWINGS</p> <p><b>GENERAL</b></p> <p>CS-1 COVER SHEET</p> <hr/> <p><b>ELECTRICAL</b></p> <p>E0.1 GENERAL NOTES &amp; LEGEND – ELECTRICAL          ED1.0 DEMOLITION PLAN – ELECTRICAL          E1.1 RENOVATION FLOOR PLAN – ELECTRICAL          E2.0 SINGLE LINE DIAGRAMS – ELECTRICAL          E3.0 PANEL SCHEDULES – ELECTRICAL</p>
---	--



Leon County - Sustainable Demonstration Center

10522 Drawn By: REM/KAS  
Project Code Checked By: PCL/RRB

12 SEPTEMBER 2011

Date  
100% Construction Documents

Revisions

▲	
▲	
▲	
▲	
▲	
▲	
▲	

COVER SHEET  
BID PACKAGE 3

Tallahassee Florida  
**CS-1**

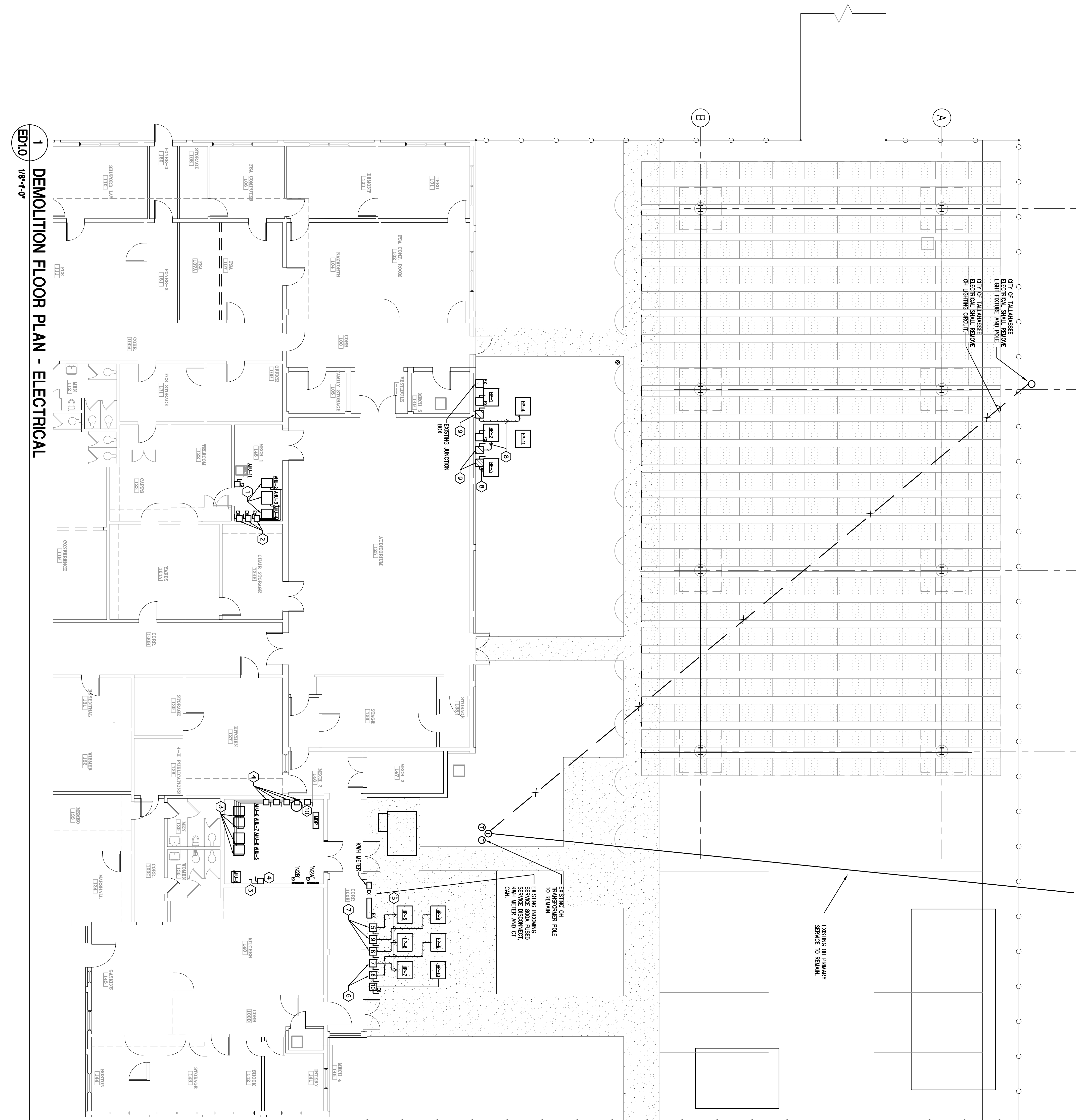


- DEMOLITION KEY NOTES**
- ① DISCONNECT POWER AND FIRE ALARM FROM EXISTING AIR HANDLING UNITS 2, 3, & 4.
  - ② REMOVE FUSES FROM FUSED DISCONNECT SWITCH.
  - ③ DISCONNECT POWER AND FIRE ALARM FROM EXISTING AIR HANDLING UNITS 5, 6, 7, 8, & 9.
  - ④ DISCONNECT POWER FROM AHU'S TO DISCONNECT SWITCHES.
  - ⑤ REMOVE FUSED DISCONNECT SWITCHES, CONDUIT AND WIRE BACK TO BREAKER PANEL.
  - ⑥ DISCONNECT FROM HEAT PUMP AND DISCONNECT SWITCH, REMOVE CONDUIT AND WIRES BACK TO BREAKER PANEL.
  - ⑦ REMOVE DISCONNECT SWITCH, PULL HOLE IN WIRE WAY.
  - ⑧ REMOVE DISCONNECT SWITCHES AND WIRE WAY, CUT WIRE WAY FEEDER CONDUIT FLUSH WITH CONCRETE FLOOR AND PLUG.
  - ⑨ DISCONNECT FROM HEAT PUMP AND DISCONNECT SWITCH, REMOVE CONDUIT AND WIRES.
  - ⑩ REMOVE DISCONNECT SWITCH, REMOVE CONDUIT AND WIRE BACK TO JUNCTION BOX.
  - ⑪ RELOCATE WATER HEATER DISCONNECT SWITCH AS REQUIRED, EXTEND EXISTING CONDUIT AS REQUIRED.

EXISTING OH PRIMARY SERVICE TO REMAIN.

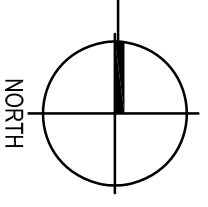
EXISTING OH TRANSFORMER POLE TO REMAIN.

EXISTING INCOMING SERVICE ROOM RISES WITH WATER AND CUT CAN.



**1 DEMOLITION FLOOR PLAN - ELECTRICAL**

ED1.0 1/8"-1"=0"



**BARNETT FRONCZAK BARLOWE ARCHITECTS**

Leon County - Sustainable Demonstration Center

10522 Drawn By: BRW  
 Project Code: Oncloud By: PCL  
 12 SEPTEMBER 2011  
 Date  
 100% Construction Documents

Revisions

**DEMOLITION FLOOR PLAN - ELECTRICAL**

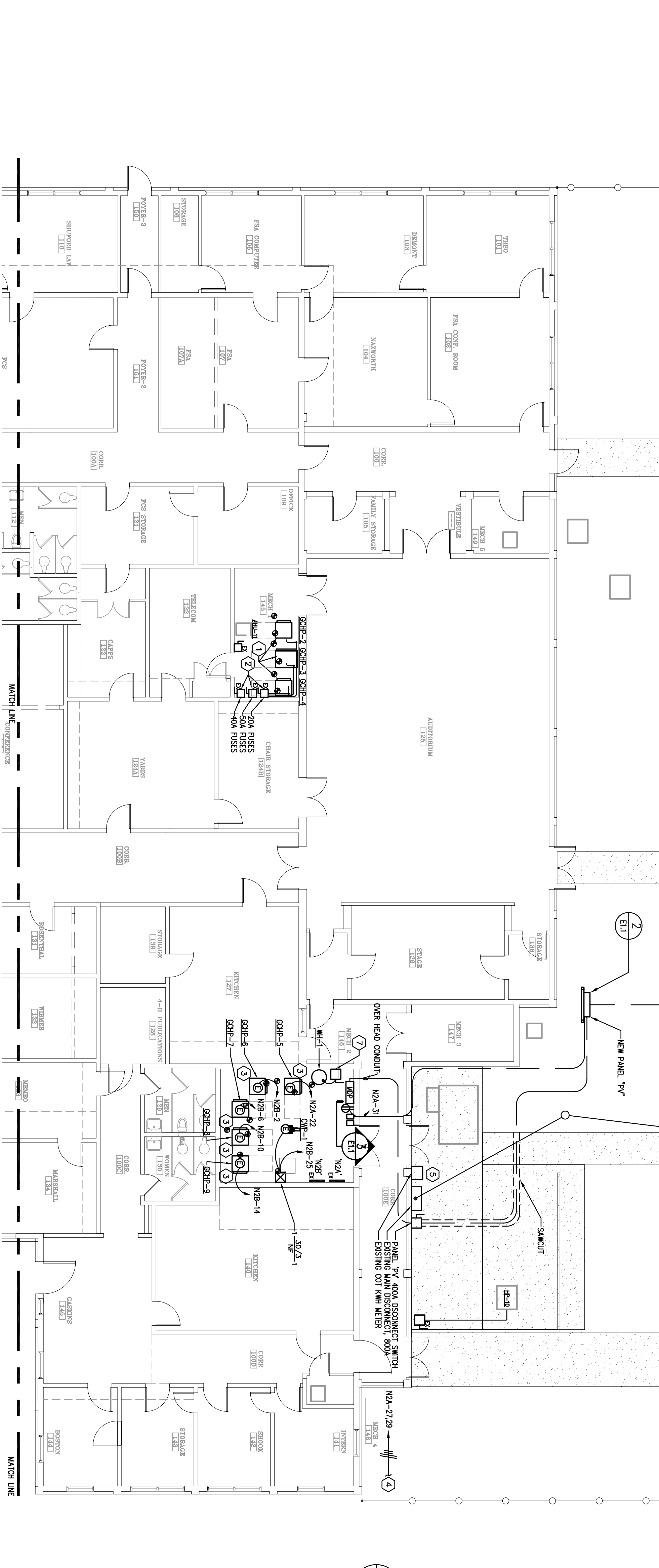
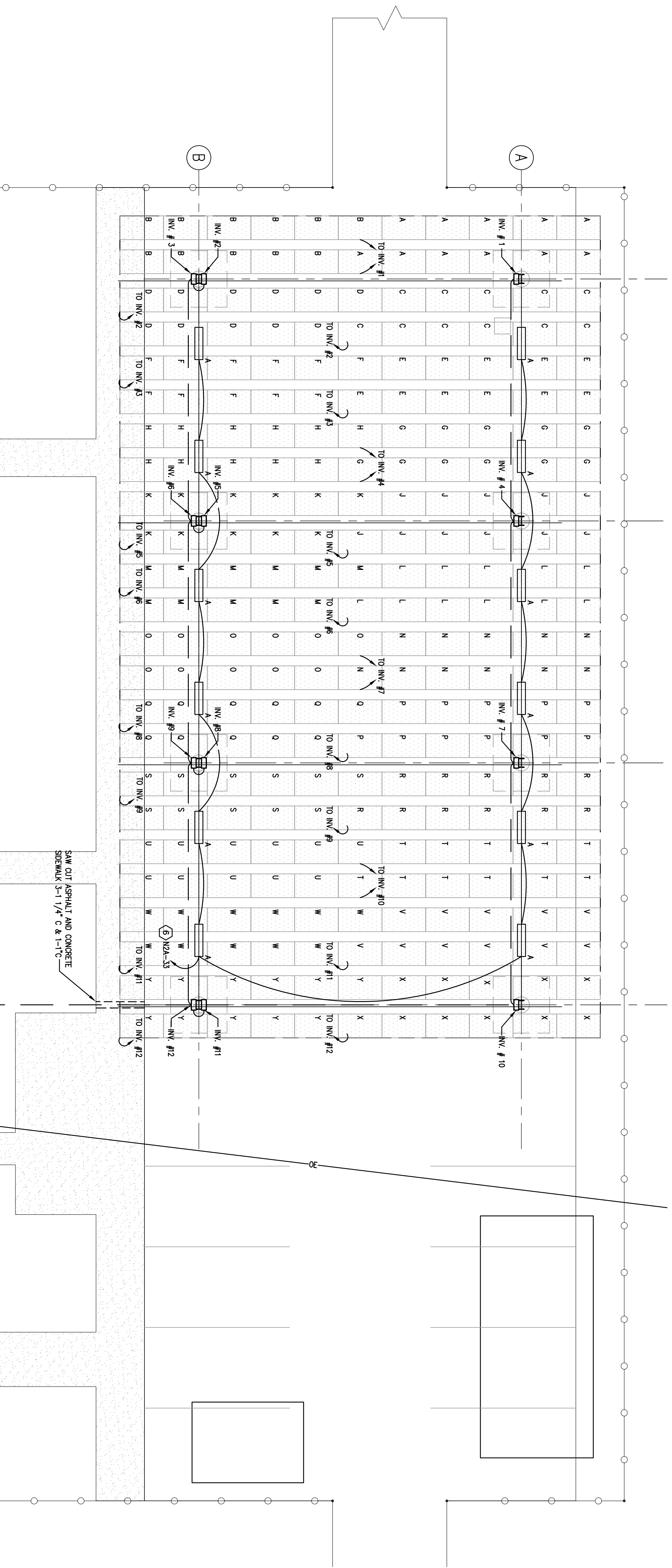
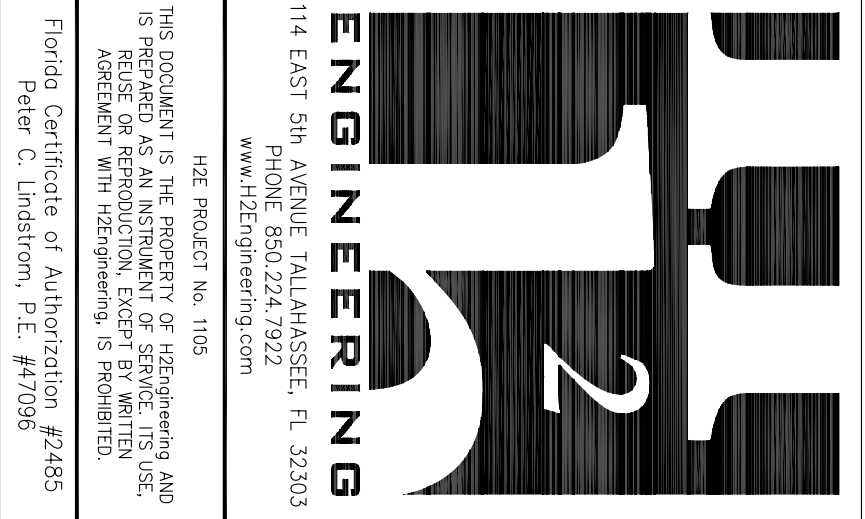
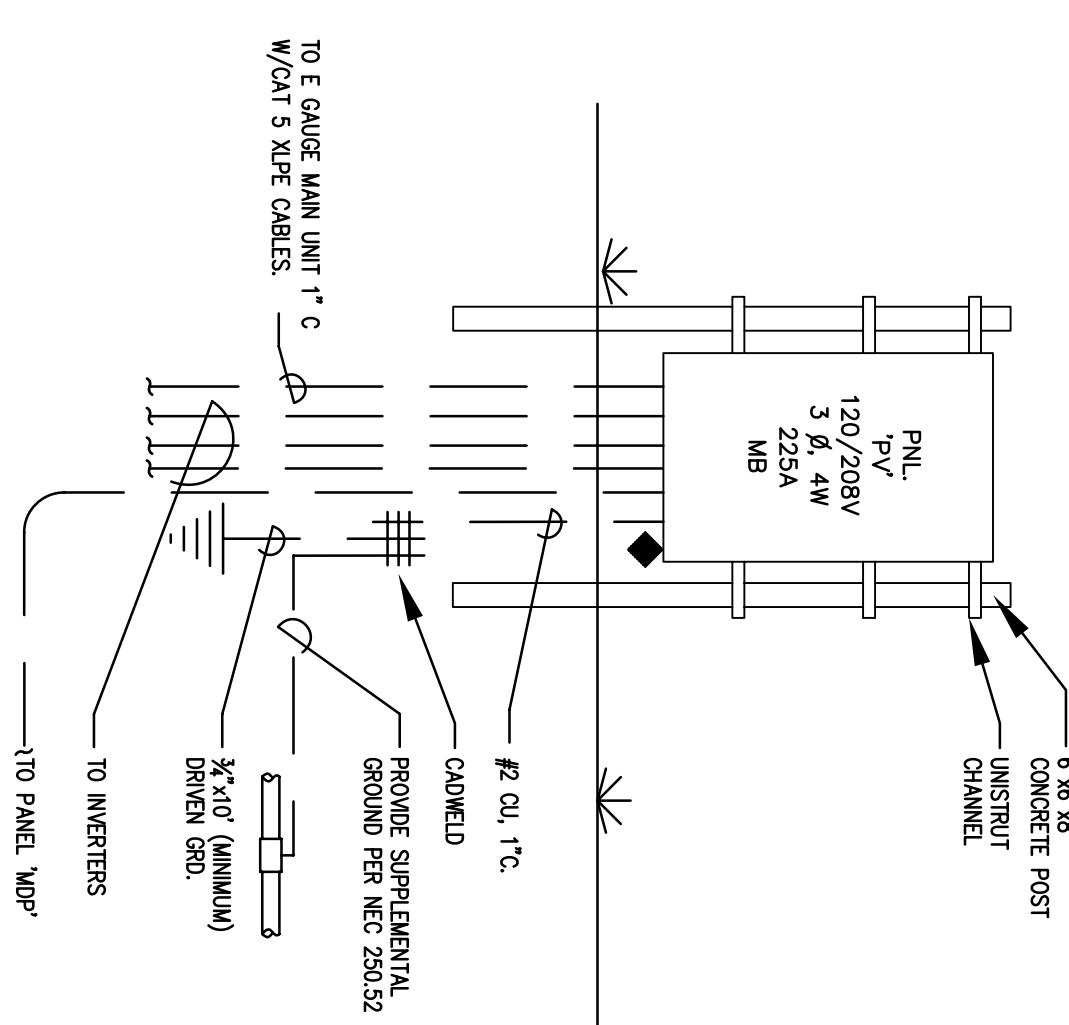
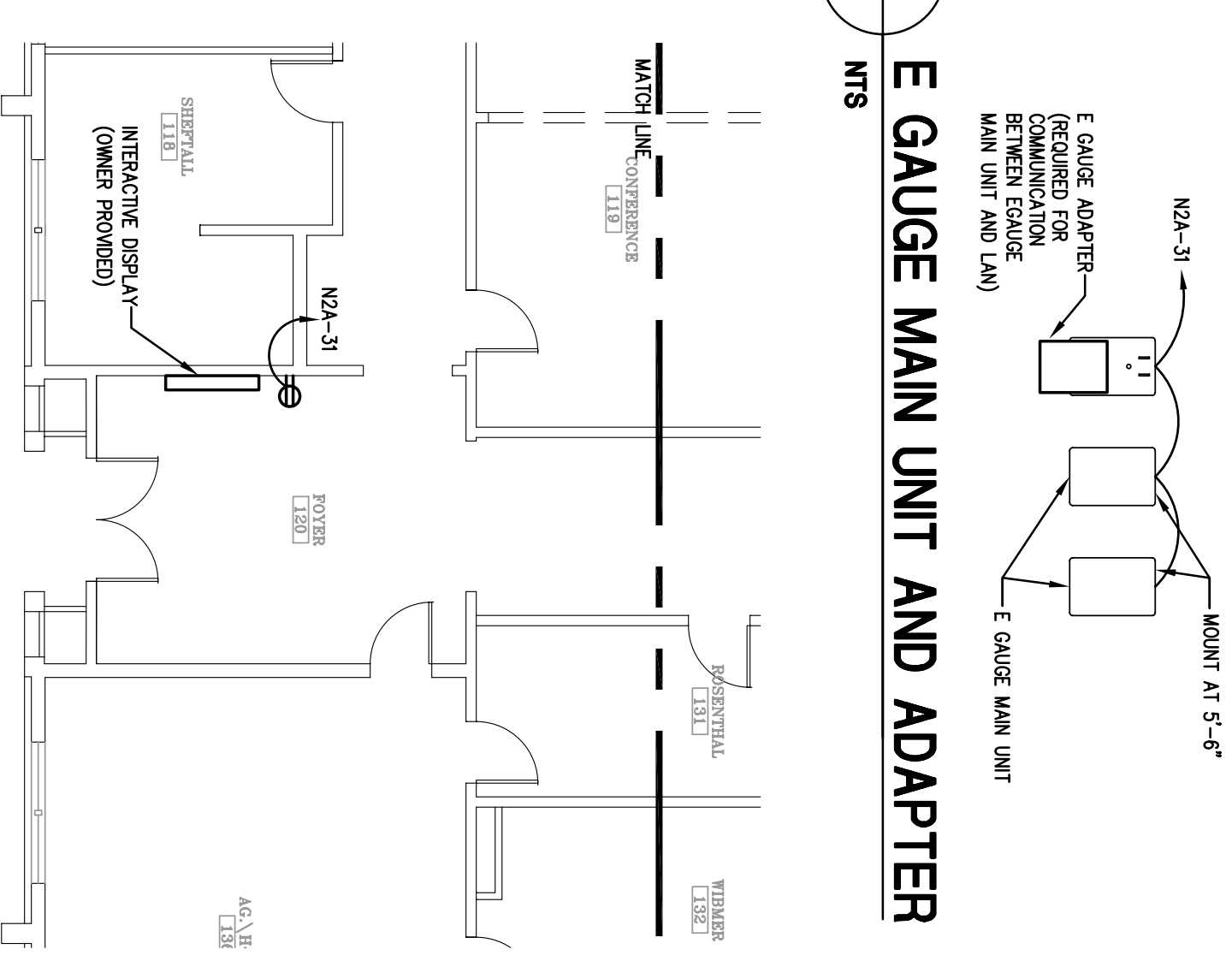
Tallahassee Florida

**ED1.0**

225 South Adams St., Tallahassee, FL 32301  
 Phone 850.224.4301 Fax 850.951-6978

**KEY NOTES**

- 1 RECONNECT AIR HANDLING UNITS TO EXISTING WIRING. EXTEND LEX WIRING AS NECESSARY DETECTORS.
- 2 PROVIDE NEW AIR HANDLING UNIT CONNECTION POINT. RECONNECT DUCT SMOKE DETECTORS.
- 3 RECONNECT DUCT SMOKE DETECTORS.
- 4 PROVIDE TWO 20A, 120V CIRCUITS TO WELL FIELD HEADER VAULT (LOCATED APPROXIMATELY 2350 TO THE SOUTH) ONE CIRCUIT SHALL BE FOR SUMP PUMP. PROVIDE APPROXIMATELY 1250 TO THE SOUTH) ONE CIRCUIT SHALL BE FOR SUMP PUMP. PROVIDE A 20A, 90' WEATHER PROOF RECEPTACLE AND A LIGHT FIXTURE. LIGHT FIXTURE SHALL CONTAIN TWO 33W, T8 LAMPS. SHALL BE RATED FOR WET LOCATION AND SHALL BE CONTROLLED BY SENSORS. SMOKE SENSORS SHALL BE SENSITIVE TO SMOKE. COORDINATE WITH ARCHITECT FOR WEATHER PROOF RECEPTACLE AND LIGHT FIXTURE.
- 5 PROVIDE A PERMANENT SIGN ON THE METER BASE READING: "WARNING - THIS EQUIPMENT POWERED BY PHOTOVOLTAIC POWER SOURCE."
- 6 WIRE PARKING LOT LIGHTING THRU PHOTOCELL AND TIME CLOCK. MOUNT PHOTOCELL ON BUILDING ROOF FACING NORTH. MOUNT TIME CLOCK NEXT TO PANEL N2A.
- 7 RELOCATE WATER HEATER DISCONNECT SWITCH.

**2 PANEL MOUNTING DETAIL****3 E GAUGE MAIN UNIT AND ADAPTER****1 FLOOR PLAN - ELECTRICAL****1 FLOOR PLAN - ELECTRICAL**

E11  
1/8\"/>



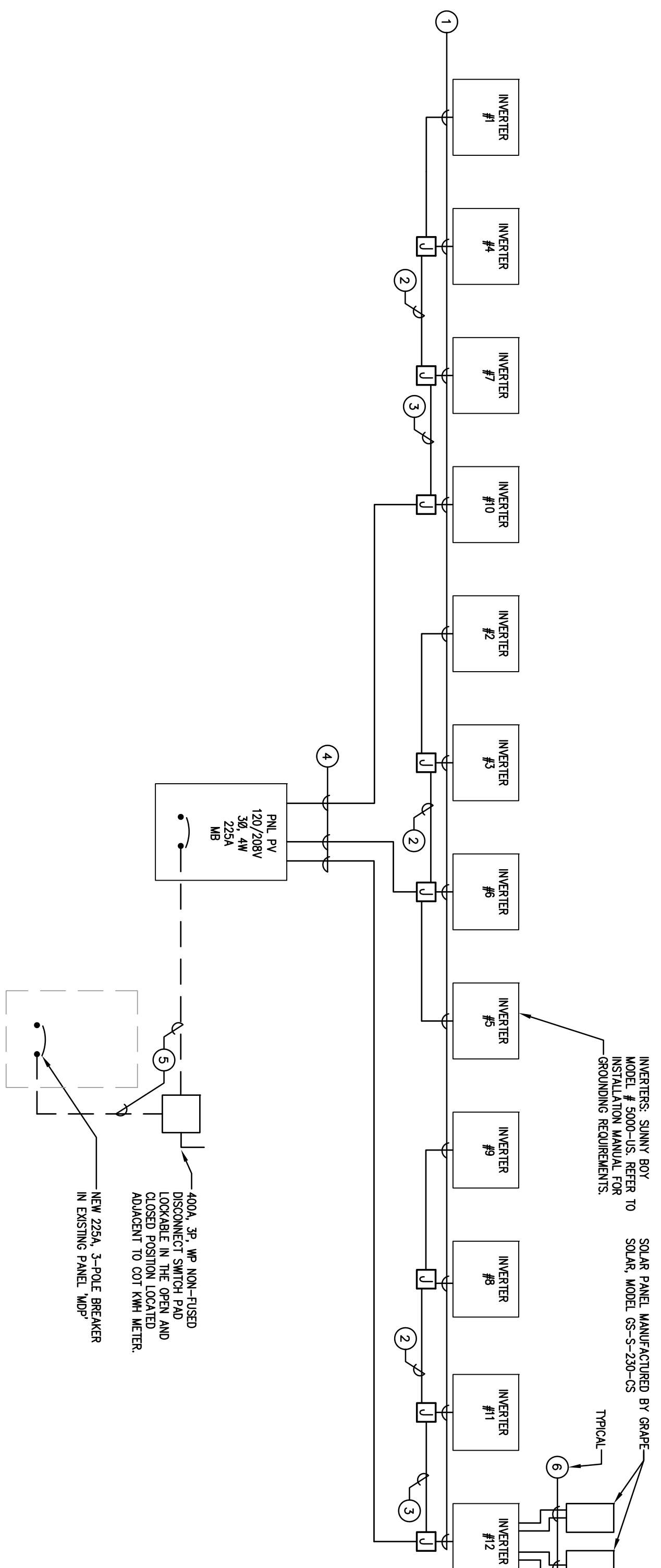
Leon County -  
Sustainable  
Demonstration Center

10522 Drawn By: BRW  
 Project Code: Overlaid By: PCL  
 12 SEPTEMBER 2011  
 Date  
 100% Construction Documents

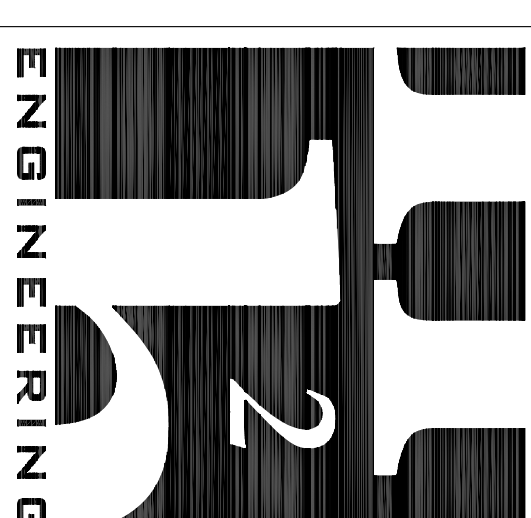
Revisions  
 △  
 △  
 △  
 △  
 △  
 FLOOR PLAN - ELECTRICAL

Tallahassee Florida

**E1.1**



CONDUCTOR SCHEDULE	
MARK	CONDUIT
①	3#8, 1#2G, 3/4"
②	6#8, 1#2G, 1"
③	9#8, 1#2G, 1"
④	12#8, 1#2G, 1 1/4"
⑤	4#4/0, 1#4G, 2 1/2"
⑥	#10-2 (DE-RATED PER TABLE 690.31 (D))



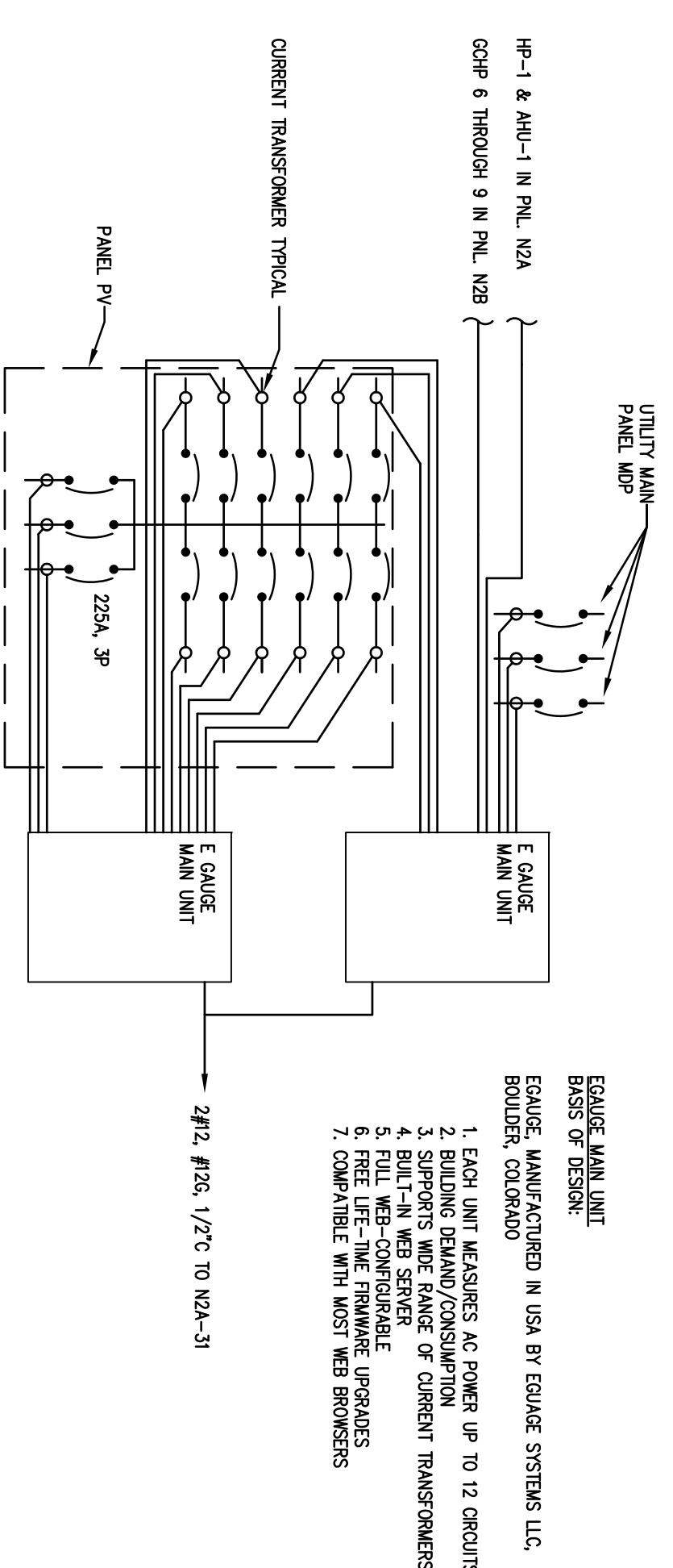
## ENGINEERING

114 EAST 5th AVENUE TALLAHASSEE, FL 32303  
 PHONE: (904) 224-9322  
 WWW.BIBAA.COM

NOTE: PROJECT NO. 1103  
 THIS COMPANY HAS BEEN DESIGNATED AS AN AUTHORIZED PROFESSIONAL ENGINEER AND IS REGISTERED AS AN INSTRUMENT OF SERVICE (I/S) USE WITH CAUTION. REGISTERED WITH THE STATE OF FLORIDA.  
 Florida Certificate of Authorization #2485  
 Peter C. Johnston, P.E. #17038

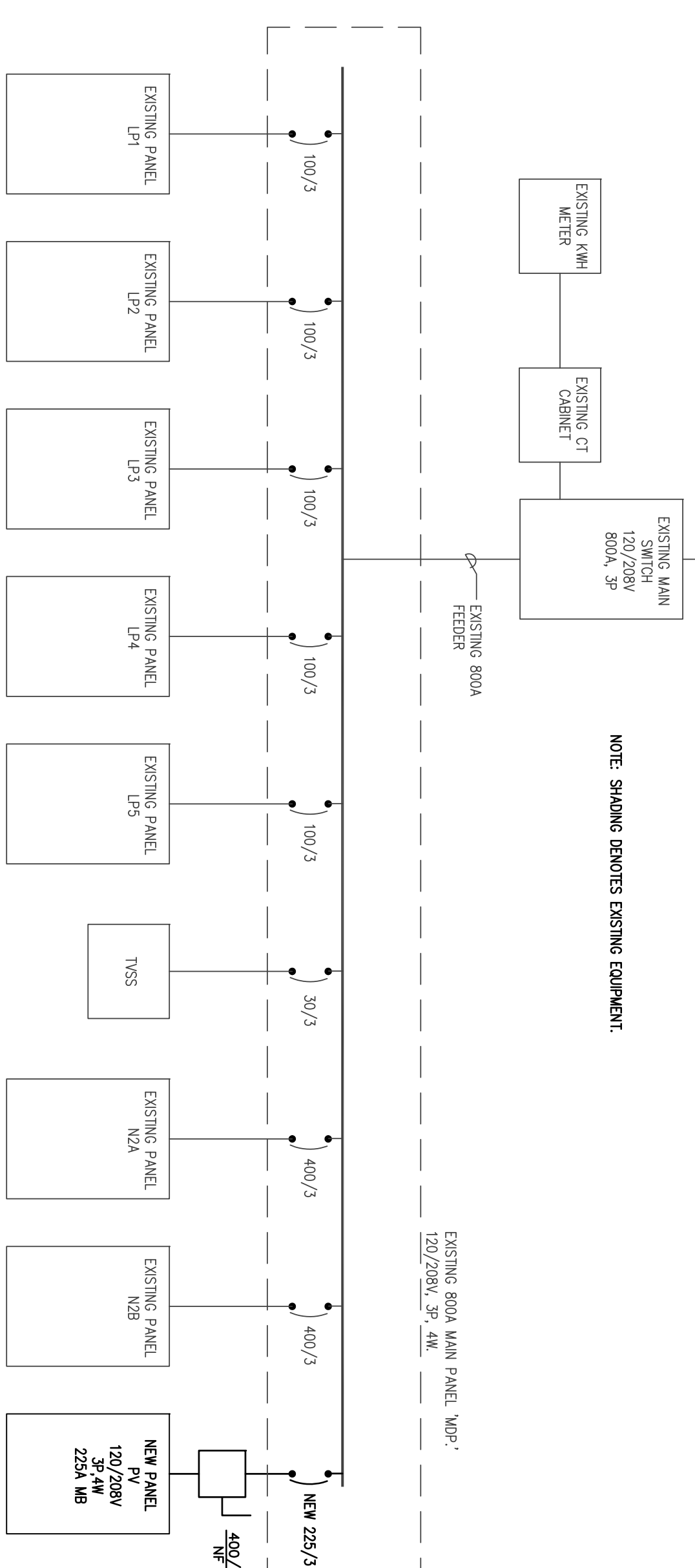
### 1 SCHEMATIC PHOTOVOLTAIC WIRING DIAGRAM, 60 KW SYSTEM E20 NO SCALE

- NOTES:
1. 2#4-250 MM<sup>2</sup> PAGES, EACH
  2. REFER TO SOLAR PANEL INSTALLATION MANUAL FOR CIRCUITING AND GROUNDING REQUIREMENTS.
  3. REFER TO SOLAR PANEL INSTALLATION MANUAL FOR CIRCUITING AND GROUNDING REQUIREMENTS.



### 2 SCHEMATIC COMMUNICATIONS WIRING DIAGRAM E20 NO SCALE

- NOTES:
1. WIRING BETWEEN CTS AND E-GAUGE MAIN UNITS SHALL BE CAT 5 UTP CABLE. EACH CABLE ON MONITOR 4 CTS.



### 3 POWER RISER DIAGRAM E20 NO SCALE

Leon County -  
Sustainable  
Demonstration Center

**BARNETT  
IRONCZAK  
BARLOWE  
ARCHITECTS**

10522 Drawn By: BRW  
 Project Code: PCL  
 12 SEPTEMBER 2011

100% Construction Documents  
 Revisions: Δ, ▽, ◊, △

SINGLE LINE DIAGRAMS - ELECTRICAL

